



DRY IRON

# DRY IRON



**DI-101**  
750W/1000W

## FEATURES

- On/Off Indicator
- Non-Stick Coating
- Aluminum Alloy Sole plate
- Overheat Protection



HEATING SOLE PLATE



TEMPERATURE CONTROLLER  
KNOB



CORD GUARD



**DI-102**  
750W/1000W

## FEATURES

- Variable Temperature Control Knob
- On/Off Indicator
- Non-Stick Coating
- Aluminum Alloy Sole plate
- Overheat Protection



HEATING SOLE PLATE



TEMPERATURE CONTROLLER  
KNOB



CORD GUARD



**DI-103**

750W/1000W



## FEATURES

- On/Off Indicator
- Non-Stick Coating
- Aluminum Alloy Sole plate
- Overheat Protection



HEATING SOLE PLATE



TEMPERATURE CONTROLLER  
KNOB



CORD GUARD



**DI-104**

750W/1000W

## FEATURES

- Aluminum Alloy Sole plate
- On/Off Indicator
- Non-Stick Coating
- Overheat Protection



HEATING SOLE PLATE



TEMPERATURE CONTROLLER  
KNOB



CORD GUARD

# DRY IRON



HEAVY WEIGHT  
**DI-105**  
1000W



## FEATURES

- On/Off Indicator
- Non-Stick Coating
- Overheat Protection
- Aluminum Alloy Sole plate



TEMPERATURE CONTROLLER  
KNOB



CORD GUARD



METAL COVER



**DI-106**  
1000W

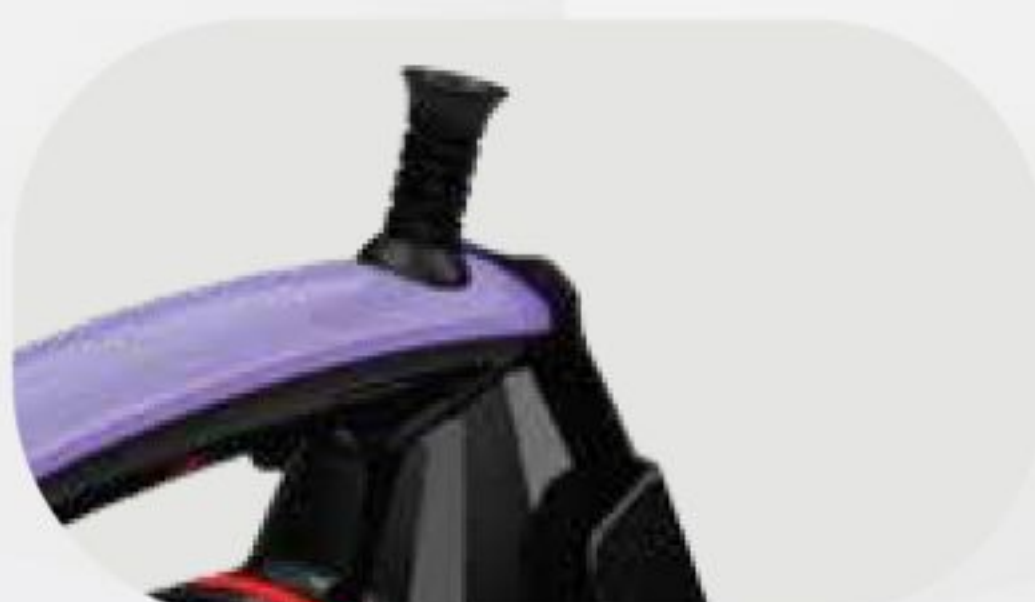


## FEATURES

- Variable Temperature Control Knob
- On/Off Indicator
- Non-Stick Coating
- Overheat Protection
- Aluminum Alloy Sole plate



HEATING SOLE PLATE



360 DEGREE CORD GUARD



DUAL COLOUR KNOB



**DI-107**

1000W



## FEATURES

- Variable Temperature Control Knob
- On/Off Indicator
- Non-Stick Coating
- Overheat Protection
- Aluminum Alloy Sole plate



HEATING SOLE PLATE



360 DEGREE CORD GUARD



DUAL COLOUR KNOB

NEW



DI-108

1000W

## FEATURES

- On/Off Indicator
- Non-Stick Coating
- Overheat Protection
- Aluminum Alloy Sole plate



HEATING SOLE PLATE



TEMPERATURE CONTROLLER  
KNOB



CORD GUARD



DI-109

750/1000W

## FEATURES

- Variable Temperature Control Knob
- On/Off Indicator
- Non-Stick Coating
- Overheat Protection
- Aluminum Alloy Sole plate



HEATING SOLE PLATE



CORD GUARD



METAL COVER

**NEW**

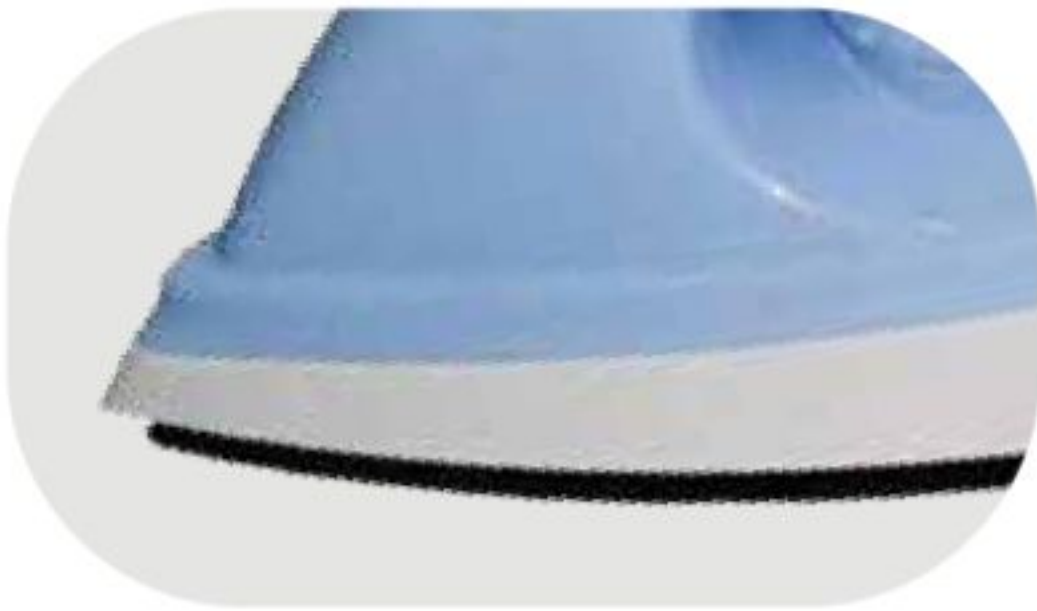


**DI-110**

750/1000W

## FEATURES

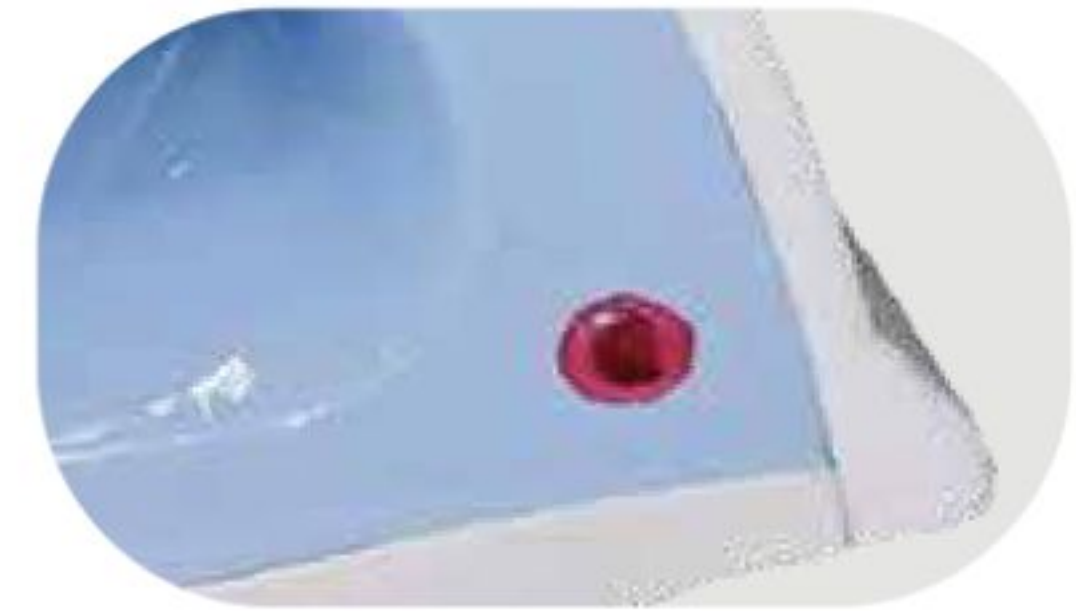
- Variable Temperature Control Knob
- On/Off Indicator
- Non-Stick Coating
- Overheat Protection
- Aluminum Alloy Sole plate



HEATING SOLE PLATE



CORD GUARD



ON/OFF INDICATOR



**DI-111**

750/1000W

## FEATURES

- Variable Temperature Control Knob
- On/Off Indicator
- Non-Stick Coating
- Overheat Protection
- Aluminum Alloy Sole plate



HEATING SOLE PLATE



CORD GUARD



ON/OFF INDICATOR

NEW



DI-112

750W/1000W

## FEATURES

- Variable Temperature Control Knob
- Non-Stick Coating
- Aluminum Alloy Sole plate



HEATING SOLE PLATE



CORD GUARD



ON/OFF INDICATOR

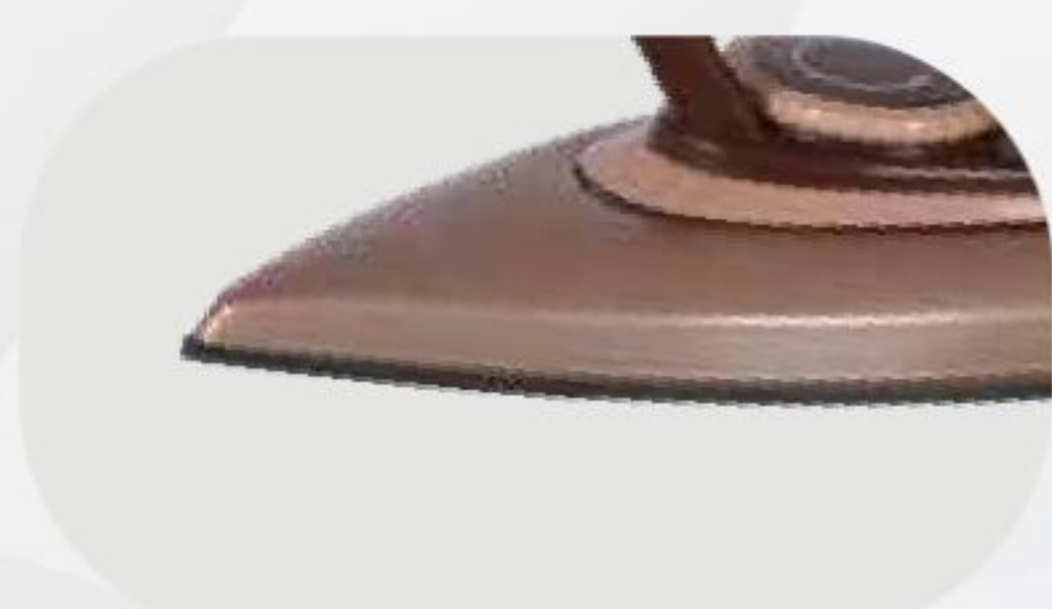


DI-113

750W/1000W

## FEATURES

- On/Off Indicator
- Non-Stick Coating
- Aluminum Alloy Sole plate



HEATING SOLE PLATE



TEMPERATURE CONTROLLER  
KNOB



CORD GUARD



STEAM

IRON

# STEAM IRON



**SI-101**

1200/1400W

## FEATURES

- On/Off Indicator
- Non-Stick Coating
- Cord Guard
- Overheat Protection
- Steam Boost
- Aluminum Alloy Sole plate



HEATING SOLE PLATE



TEMPEARTURE CONTROLLER KNOB



WATER KNOB



**SI-102**

1200W/1400W

## FEATURES

- On/Off Indicator
- Non-Stick Coating
- Cord Guard
- Overheat Protection
- Steam Boost
- Aluminum Alloy Sole plate



HEATING SOLE PLATE



TEMPEARTURE CONTROLLER KNOB



WATER KNOB